

Waste Reduction

by
Leah Samson



Mission

To provide waste
reduction and
recycling
assistance for the
benefit of
business and the
environment



WasteCap
Resource Solutions
501(c)(3) Non-Profit

Why?

Why should we care about
waste?

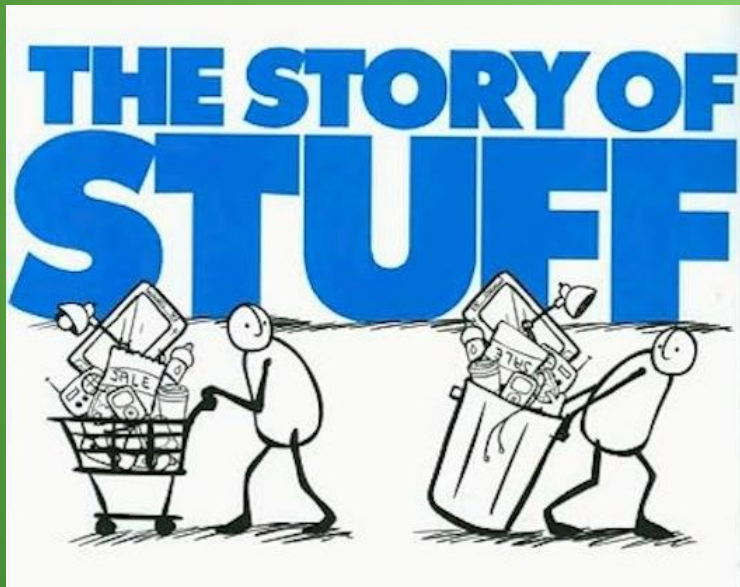


Big Picture:

It's not just about
trash

We are all
connected.

Everything has a
story.





Where is away?



Community:

Landfill costs

Air quality

Clean water

Non-profits / Create Jobs

Organization:

Operational costs

Employee satisfaction

Liability

Wisconsin Recycles



The following items are **banned** from landfills and incinerators statewide and should be reused, recycled or composted.

Containers

- #1 and #2 plastic bottles and jars
- Aluminum containers
- Bi-metal cans
- Glass containers
- Steel (tin) cans

Paper and Cardboard

- Corrugated cardboard
- Magazines, catalogs, and other materials on similar paper
- Newspaper and newsprint materials
- Office paper

Yard Materials

- Grass clippings
- Debris and brush under 6" in diameter
- Leaves

Vehicle Items

- Lead-acid vehicle batteries
- Tires *
- Used oil filters
- Waste oils *

**These items may be burned in a solid waste treatment facility with energy recovery.*

Appliances

- Air conditioners
- Boilers
- Clothes dryers
- Clothes washers
- Dehumidifiers
- Dishwashers
- Freezers
- Furnaces
- Microwaves
- Ovens
- Refrigerators
- Stoves
- Water heaters

Electronics

- Cell phones
- Computers – desktop, laptop, netbook, tablet
- Computer monitors
- Computer keyboards and mice
- Computer scanners
- Computer speakers
- Desktop printers (including those that fax and scan)
- DVD players, VCRs, DVRs and all other video players
- External hard drives
- Fax machines
- Flash drives/USBs
- Other items that plug into a computer
- Televisions

Why ban items from the landfill and incinerator?

The items on this list are made of materials that can be reused in new products. Some also have toxic components that we do not want in our groundwater, air or soil. Recycling and composting allow landfills to last longer, provide markets with valuable reusable materials, create jobs, and prevent pollution.

Why not ban more materials?

Corrugated cardboard is banned while waxed cardboard is not. Some things with plugs, like computers, are banned, while others, like toasters, are not. Why? Current bans cover some of the most easily reusable or most toxic materials on the market today. Eventually more items may be added to this list as new recycling markets develop or the types of materials we throw away change.

Some communities go above and beyond what is required by state law. Check with your local government or recycling service provider to find out what additional materials are accepted for recycling in your area. For more information about Wisconsin's recycling program, search "recycle" at dnr.wi.gov. Wisconsin's recycling requirements apply to everyone in the state at all residences and places of work or play.



Wisconsin Department of Natural Resources
Bureau of Waste and Materials Management
P.O. Box 7921, Madison, WI 53707 • (608) 266-2111
DNRWasteMaterials@wisconsin.gov

The Wisconsin Department of Natural Resources provides equal opportunity in its employment, programs, services and functions, under an Affirmative Action Plan. If you have any questions, please write to Equal Opportunity Office, Department of Justice, Washington, D.C. 20540.

This publication is available in alternative format (large print, braille, multiple etc.) upon request. Please call (608) 266-2111 for more information.

Me:

Cost of living

Practice mindfulness

Modeling for my children

You:

Why do you care about waste?

Now what:

Baseline

Baby steps

Get good

Baseline:

Bills

Waste assessment

Review banned list

Baby steps:

Tracking

One initiative

Reusable options

Get good:

Get a success

Recognition

Educate

Do it again:

Write a policy
Creative diversion
Pick goals



Zero waste:

Different model

Innovation

Biomimicry

Resources

- Wi DNR – banned materials
- US Green Building Council – policies
- EPA – waste audit/assessments

Transform Resources and Conserve Energy™



Online documentation system
Track C&D debris recycling results



WasteCapTRACE is free for use in Wisconsin thanks to sponsorship by Boldt Construction.

Join WasteCap Resource Solutions in *Transforming Waste Into Resources.*

Questions?

www.wastecap.org | (608) 245-1100

Leah Samson, Project Manager
Lsamson@wastecap.org



Come visit our Architectural Salvage Warehouse!

2123 W. Michigan St.
M-F 10am – 5pm, Sat 10am – 2pm