

Email not displaying correctly? [View it in your browser.](#)



October 2025 Newsletter

[Sustain Dane](#) is the sustainability organization of Dane County. [Join us](#) and get involved in accelerating community well-being.



Sustain Dane Summit - Triple Match

2025 Sustain Dane Summit - Triple Match

Thanks to generous support from the Sustain Dane board of directors, **on the day of the Summit (Friday, November 7) your donations to Sustain Dane will be tripled, up to \$10,000.** Whether you are attending the Summit in person, or sending good thoughts from a far, your support is needed to ensure we can continue to provide sustainability resources, inspiration, & action. Change happens when inspired people take action.

Sustain Dane, and our community, have experienced federal grant cuts, mid-year funding reductions, and the silencing of climate urgency in many arenas.

We have not lost our commitment, and we've seen the passion for sustainability grow at the local level. The strain on the environment and the impact on people is here, and we need the work of Sustain Dane as much as ever.

Donate to the Triple Match

Housing + Sustainability



Elmer Moore
CEO & Executive Director
WHEDA



Sarah Neujahr
Principal
New Year Investments



Torrance Kramer
President
Accurate Airtight Exteriors



Olivia Parry
Senior Planner
Dane County Planning and
Development



Abigail Corso
Chief Strategy Officer
Elevate



Housing + Sustainability Panel - AIA Credit

AIA Continuing Education Credit

American Institute of Architects (AIA) continuing education credit is available for the Summit's Housing and Sustainability session. The American Institute of Architects' Continuing Education System approved the panel to count as one Learning Unit (LU) for a Health, Safety, and Welfare (HSW) credit.

Housing is a cornerstone of community well-being, influencing everything from social connection and public health to economic stability and climate resilience. Affordable housing plays a vital role within this broader housing ecosystem, ensuring access and equity for all. This session will include four panelists who will explore the relationship between housing and sustainability. We hope you can join us for the full day of the Summit to connect, learn, and take action.

Register for the Summit here



Huda Alkaff
Wisconsin Green Muslims



Erika and Jessica Jones
Giant Jones Brewing

Live Forward Award Winners 2025

Live Forward Award Winners 2025

The Live Forward Awards acknowledge inclusive leaders who locally focus on sustainability, community healing, and resilience. The 2025 winners include:

- **Huda Alkaff**, Wisconsin Green Muslims
- **Erika and Jessica Jones**, Giant Jones Brewing

Huda Alkaff is an ecologist, environmental educator, and the Founder and Director of Wisconsin Green Muslims, a grassroots state-wide environmental justice group that addresses environmental justice issues related to climate change, clean air and pure water, healthy food, energy democracy, waste reduction and transportation equity.

Giant Jones Brewing is a women and queer owned and operated, certified organic brewery in Madison. By partnering with small grain farmers and processes, being a part of Madison Shared Solar and Green Power Tomorrow, and packaging beer in returnable and reusable glass bottles, Giant Jones Brewing has a commitment to tasty beer and sustainability.

Congratulations to these incredible awardees and to [all the nominees](#). Celebrate and hear from the LFA winners at the Sustain Dane Summit on November 7.

Join us in honoring them at the Summit

Renewing Members



Purevant Living

RENEW Wisconsin

Root 2 Rise

True North Collective

UW Office of Sustainability

JP Cullen

Village of McFarland

WasteCap

Wisconsin Green Muslims

+ 4 new individual members

SUSTAIN DANE MEMBERSHIP

Member Recognition

Sustain Dane recognizes businesses, organizations, and individuals who value sustainability and are a part of our membership.

[Sustain Dane membership](#) offers inspiring education and professional development, powerful connections through networking and volunteering, and customized support to help you accelerate sustainability actions for community well-being.

Membership is rolling throughout the year, and all are welcome to join. Recent renewing members include:

- Community Shares of Wisconsin
 - DesignCraft
 - Greater Madison MPO / Roundtrip
 - JP Cullen
 - Purevant Living
 - RENEW Wisconsin
 - Root 2 Rise
 - SmithGroup
 - Society of St. Vincent de Paul
 - True North Collective
 - UW Office of Sustainability
 - Village of McFarland
 - WasteCap
 - Wisconsin Green Muslims
 - +4 Individual members
-



Food Scrap Drop Off End of Season

Our last Madison food scrap drop-off site will occur tomorrow, November 1st at the Westside Community Market from 7:00 AM - 12:30 PM. We are happy to take your pumpkins. A huge thank you to everyone who contributed to the program. Your participation has led to less waste in the landfill and an expansion of composting at Neighborhood Food Solutions Farm in Fitchburg. To date, we have collected 38,600+ lbs of food scraps and had over 6,500 drop-offs!

Do you want to continue recycling food scraps during the winter? Check out the [Dane County Scrap Stop Locations](#) in Madison, Middleton, Fitchburg, McFarland, and Verona.

How can you keep your pumpkins out of the landfill? Bring them to:

- Bring them to a food scrap drop-off site
- Take them to the [Henry Villas Zoo pumpkin composting drive](#) on Nov 8
- Place pumpkins at the curb with leaf collection (Madison residents)
- Add them to your own compost (break pumpkins to help decomposition)
- Consider cutting pumpkins into pieces and feeding the neighborhood wildlife.



Home Energy Rebate Train-the-Trainer Program

Home Energy Rebate Train-the-Trainer Program

In partnership with Focus on Energy and Latino Academy of Workforce Development, Sustain Dane completed our Home Energy Rebate Train-the-Trainer Program this month. This program equips community members to help families save money, conserve energy, and create healthier and more comfortable homes.

In September, students dove into topics like weatherization, energy-saving home upgrades, and Wisconsin rebate programs. In October, the new trainers put their skills to work, sharing what they learned with friends, co-workers, family, and neighbors to help more households benefit.

“I learned about energy auditing, which I didn’t know before. Now I see it is key to solving energy problems, saving energy, and protecting my wallet,” shared Guillermo, program participant.



Volunteers Collect Seeds at Prairie Ridge

Volunteers Collect Seeds at Prairie Ridge Conservation Park

At Prairie Ridge Conservation Park, volunteers collected seeds from various native species including light purple coneflowers and round headed bush clover. By collecting seeds, volunteers help to preserve Wisconsin's native plants for years to come.

Volunteers also walked through the prairie with Madison Parks ecologists learning about plant identification skills and gaining a deeper understanding of the native species that make conservation parks so vital to biodiversity and climate resilience.

A big thank you to all the volunteers and Madison Parks for leading such an engaging and impactful experience! Sustain Dane offers volunteer opportunities throughout the year. Stay tuned for the 2026 volunteer schedule.



Accelerate Green Teams

Business leaders from across Dane County came together for our Accelerate Green Teams gathering at TruStage last month. Green Teams empower employees to lead sustainability from within, helping Dane County companies take meaningful action that drives local impact and long-term change.

At the gathering, attendees swapped tips and tricks, brainstormed ways to overcome challenges, and explored opportunities to share resources and collaborate in the future.

Participants included:

- TruStage
- Findorff
- EUA
- Summit Credit Union
- UW Credit Union
- Sketchworks Architecture
- Overture Center for the Arts
- Rehlko

We also got a behind-the-scenes tour of the beautiful TruStage campus, complete with its stunning living wall. This was our very first Green Team gathering, and we're excited to host more opportunities like this for all Sustain Dane members in 2026.



Expanding Electric Vehicle Access in Dane County

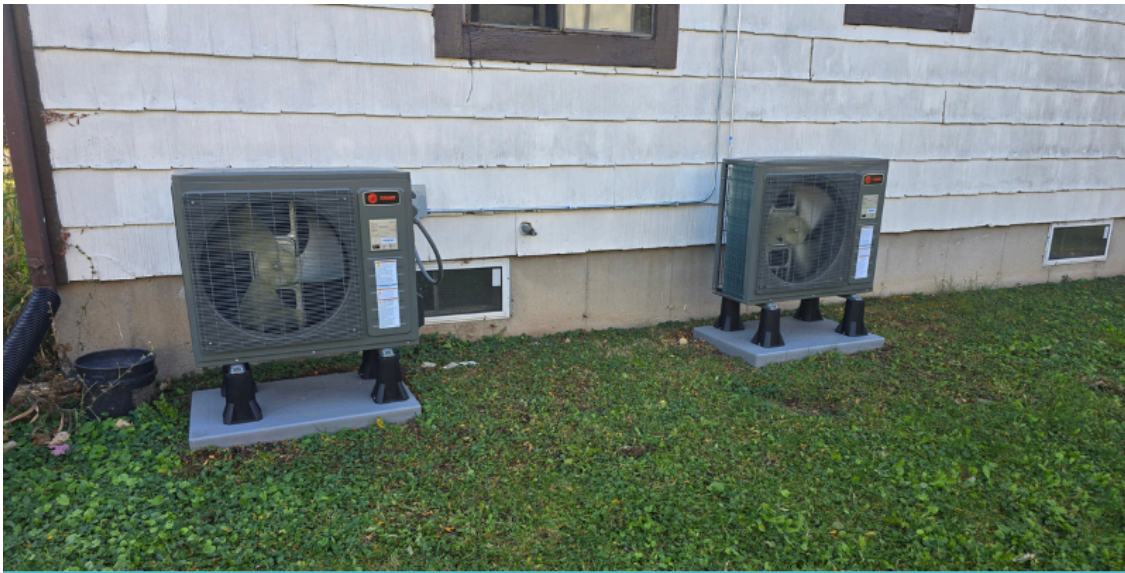
Expanding Electric Vehicle Access in Dane County

Electric vehicles continue to gain traction across the county. In the third quarter of this year, 1 in 10 new cars sold in the U.S. was electric, setting a record for electric vehicle sales. Once people make the switch to electric, most never go back to gas, which results in a healthier environment and climate.

Alongside this, and with the used electric vehicle market growing quickly, the need for reliable and accessible charging is becoming more important than ever.

Charge Up Dane County is a countywide initiative that expands public electric vehicle options with a focus on implementing chargers near multi-family housing, multi-modal areas, and rural communities.

[Learn more about Charge Up Dane County](#)



Efficiency Navigator

Efficiency Navigator Update

Sustain Dane and partners are hard at work with the [Efficiency Navigator program](#), supporting small to medium-sized affordable apartment housing to become more efficient, affordable, and resilient.

We recently completed the installation of eight air source heat pumps (ASHPs) across three 4-unit buildings in Fitchburg's Jamestown neighborhood. The new ASHP systems reduce reliance on inefficient, 40+ year-old existing gas furnaces. In addition to heating, ASHPs also provide cooling which eliminates the need for through-wall or window air-conditioning units.

ASHPs save energy, reduce costs, and protect the climate by decreasing dependence on fossil fuels. Heat pumps transfer heat rather than generate it through combustion; they can deliver up to three times more heat energy to a home than the electrical energy they consume.

[Learn more or apply on our Efficiency Navigator page](#)

We appreciate you being part of our Sustain Dane community. Make a difference in local sustainability—support Sustain Dane today.

Donate to Sustain Dane



In the Community

- November 1: [Last food scraps collection](#) at Westside Community Market
- November 1: [Prairie Seed Collecting](#) at Faville Grove Sanctuary
- November 2: [Nature Journaling Workshop](#) at Lussier Family Heritage Center
- November 7: [Sustain Dane Summit](#) and Triple Match Donation Day
- November 9: [Kids on the Prairie](#) at Holy Wisdom Monastery
- November 10: [Learn to Grow Native Plants](#) at Lussier Family Heritage Center
- November 15: [Ecological Restoration Work Party](#) at UW Arboretum
- November 20: [Native Plant Seed Swap](#) at Goodman Community Center
- November 22: [Wisconsin Youth Climate Conference](#) at Madison College

Sustain Dane Forest & Tree Members and Partners.
Join the Sustain Dane Membership at the Forest, Tree, or Leaf level.

Support organizations that value sustainability:



Copyright © 2025 Sustain Dane, All rights reserved.

Want to change how you receive these emails?
You can update your preferences or unsubscribe from this list.

